

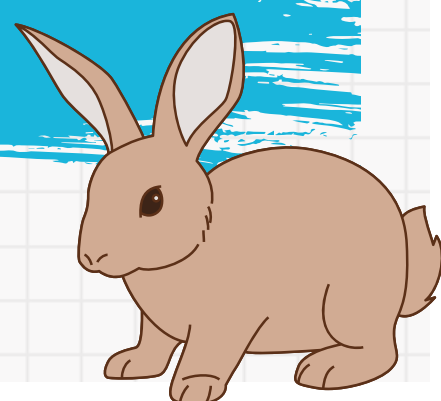
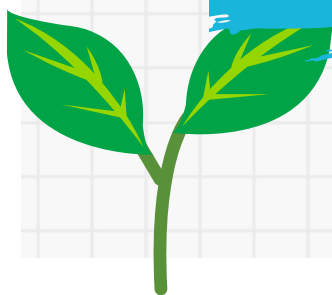
\* IGCSE \*

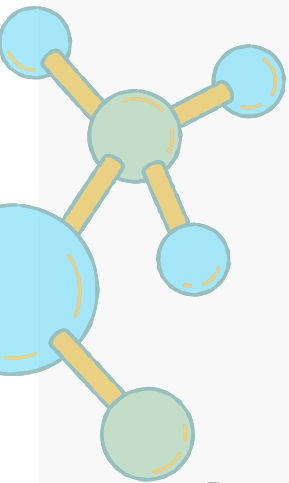
# BIOLOGY

Everything you need to know  
about studying IGCSE Biology  
with Tutor Led Learning



Edexcel IGCSE Biology  
From Sept 2026





# Welcome!



Dear Parents/Carers,

Thank you for your interest in your child studying **IGCSE Biology** with Tutor Led Learning.

This information pack contains all you need to know about the course, the exams, the package of support we offer and what makes Tutor Led Learning special.

If you are interested in other subjects at GCSE level, or Key Stage 3 (KS3), please head over to our [website](#) where you will find the latest information.

If you have any unanswered questions after looking through this pack please don't hesitate to get in touch.

With all best wishes,

Tutors Andy and Dave

*Be different, together.*



---

# YOUR TUTOR...

## ***TUTOR ANDY***

I'm Tutor Andy, co-founder of Tutor Led Learning (TLL) and a passionate science educator. My journey began with a dual honours degree in Biology and Psychology at Keele University, followed by teaching English in Japan and then a decade in design, events, and publishing.



**Tutor Andy BSc, PGCE, DSL**

In 2010, I earned a PGCE from the University of York, focusing on science education and autism support. I then spent nearly seven years teaching sciences to 11-18 year olds in UK state schools.

In 2018, I transitioned to private tuition and part-time NHS roles, including working in a CAMHS inpatient unit and mental health research. These roles deepened my understanding of the crucial link between mental health and learning.

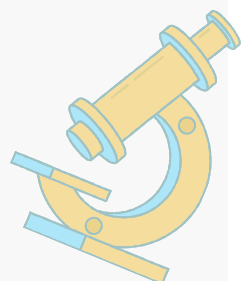
When Covid hit in 2020, Tutor Dave and I combined our tutoring businesses to launch TLL. In 2022 we were delighted to be awarded Approved Provider status by City of York Council.

I've seen how 1:1 and small group online learning can transform engagement, particularly for SEND students and those who don't 'fit' what schools have to offer. My teaching emphasises curiosity, inclusion, and linking learning to real-world issues.

I look forward to answering any queries you might have and helping your child to succeed in this course!

## **Qualifications**

- BSc in Biology and Psychology
- PGCE and QTS
- Enhanced DBS
- Designated Safeguarding Lead Level 3 Training
- Mental Health First Aid trained
- Safeguarding and Child Protection Training
- Mental Health and Emotional Wellbeing Safeguarding In Education Training
- Prevent Training
- All statutory NHS and school training when employed there



# AT A GLANCE...

## **IGCSE BIOLOGY**

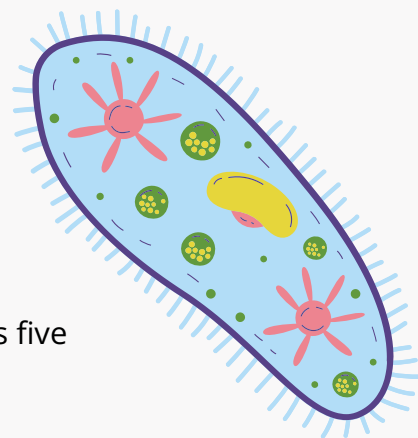


<b>Course Title</b>	IGCSE Biology
<b>Exam Board (course code)</b>	<a href="#">Edexcel (4Bi1)</a>
<b>Course Length</b>	Two years (approximately 11 terms of, usually, 6 weeks each = c66 live lessons)
<b>Course Dates</b>	From September to the week before the final exam the following year (usually early June)
<b>Tutorials</b>	Weekly live, interactive lessons on Zoom with cameras on
<b>Homework</b>	Set and marked weekly with personalised feedback on content and exam technique
<b>Additional Support</b>	Tests, revision, mocks, practical days, corny jokes...
<b>Group Size</b>	Usually 5-7 students per group
<b>Exams</b>	Two exam papers: May/June or November sittings (parents/carers to arrange)
<b>Fees</b>	£1,100 (comprising a £220 deposit* then £80 per term)
<b>Financial Assistance</b>	We work with a charity who may be able to provide financial assistance to families facing hardship. Get in touch to find out more.



# THE COURSE...

# **IGCSE BIOLOGY**



## Five units in the course

This engaging, interesting and highly relevant course comprises five units of varying length:

- 1 The nature and variety of living organisms
- 2 Structures and functions in living organisms
- 3 Reproduction and inheritance
- 4 Ecology and the environment
- 5 Use of biological resources

Our well planned and well resourced tutorials ensure all aspects of the course are covered in accordance with the exam board's three assessment objectives.

## Assessment objectives (AOs)

AO1: Knowledge and understanding (40%)

AO2: Application, analysis and evaluation (40%)

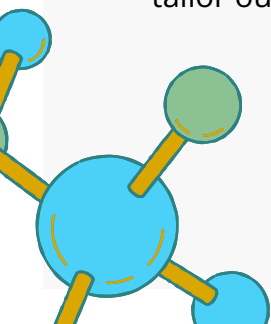
AO3: Experimental skills, analysis and evaluation of data (20%)

## The tutorials

Tutorials are lively, engaging and interactive. We know our students and our students feel confident joining in and taking risks with their learning. Our bespoke lessons use a range of digital resources, making learning fun and interactive. Through the use of Google classroom we provide specially curated resources (eg websites, videos, news articles) to complement learning and provide a back-up for missed lessons and/or revision opportunities.

## The homeworks

Our students start practicing GCSE level exam questions from the very first lesson. We take this approach because we know the importance of developing exam skills in order to maximise achievement. Homework is set weekly and individualised feedback is given. This dialogue means our students feel incredibly well supported and we are able to tailor our delivery on a weekly basis.



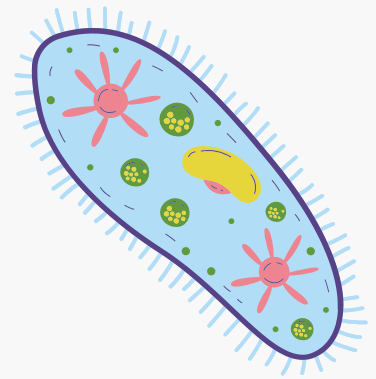
---

# THE COURSE...

## ***IGCSE BIOLOGY***

### Science practicals

Although science practicals are not compulsory in International GCSEs we ensure that they are addressed through discussion of appropriate videos and optional science practical days. As well as supporting AO3 our attention to the practical side of science brings the subject to life and develops those all important critical thinking skills. We are able to offer bespoke science practical days with priority places offered to our GCSE students (these take place near York, England).



### Mathematics

Students are advised to be progressing their GCSE Mathematics (and GCSE English) skills alongside this course. Maths is not a substantial part of IGCSE Biology (around 10%) but it is important students are able to work out percentages, draw graphs, write in standard form and so on. More details of the maths requirement can be found in the exam board's specification.

### Prior learning requirements

Students taking IGCSE Biology should have completed most/all Key Stage 3 Biology and ideally Chemistry and Physics. Many of our students complete Lower and Upper Key Stage 3 Biology with us in our live, small group KS3 classes ([more details on our website](#)). Students should have Key Stage 3 level Maths and English skills and be developing their GCSE level skills. This course requires students to have self-motivation and self-management skills such that they are able to self-study, complete their homeworks by set deadlines and act on feedback given.





# WHAT MAKES US DIFFERENT..?

## ***OUR APPROACH***

Tutor Led Learning was founded in 2020 by two former classroom teachers who brought together their independent, face-to-face tutoring businesses when the Covid pandemic hit.

As well as our considerable teaching experiences in and out of the classroom, we also hold Psychology qualifications, have taught abroad (Spain and Japan), worked in Child and Adolescent Mental Health Services (CAMHS), worked in Mental Health Research for the NHS and run our own businesses (outside of tutoring).

These life experiences have led us to passionately believe that education is about more than simply achieving qualifications. Education is about personal development, enhancing wellbeing and opening up further opportunities for growth.

### Three Core Principles

Our belief, that tutoring is about whole-person development, means we follow three core principles in our GCSE tutorials:

1

#### Small, friendly groups

Our small groups mean that we get to know our students and they get to know each other! Students feel safe in taking risks with their learning and enjoy each other's company with anecdotes and humour. We cap our GCSE group sizes at **just seven students**.

2

#### Genuinely interactive

Nods, smiles, frowns etc. provide vital feedback so we can adjust the style and pace of our delivery. Having cameras on makes lessons significantly more enjoyable, sociable and helps young people develop those all important interpersonal skills.

**Camera use is compulsory in all our GCSE classes** as it also helps us to check engagement and attendance. We have many successful strategies for helping any anxious students feel at ease on camera.

3

#### Live Lessons - not recordings

Unusually **we do not provide lesson recordings**. We find recordings reduce attendance, hinder engagement, and take away from the unique experience of being together and interacting in real time.

We do share specially selected resources, via Google Classroom, to assist missed learning / revision and we're happy to give that little bit of extra help where we can. [Read more about our thoughts on recordings in our blog.](#)

---

# TUTOR LED LEARNING...

## ***OUR APPROACH***



### Contact

As part of our overall support package we are always available on the 'end-of-an-email' and usually able to respond quickly to any queries from parents/carers or students.

### Learning Snapshots

We provide annual Learning Snapshots around the end of Term 3 each academic year. These Learning Snapshots include information on attendance, homework submission, engagement in tutorials and an indication of likely attainment.

### Free Newsletter

All families joining our Learning Community receive a free weekly online newsletter with information about what has been going on, links to resources, priority sign-ups, discounts, news and questions for our younger learners to show off what they know.





# TUTOR LED LEARNING...

## ***JOIN US!***



Like what you see so far? We know choosing a long-term tutor is a big decision for both parent/carer and student so we want to make the process as easy and reassuring as possible.

Our process is straightforward and easy to follow:

**1** **Get in touch** - either [email](#) us directly or complete [this short form](#)

**2** **Check us out** - have a chat, observe a lesson, view a sample Google classroom resources

**3** **Join us** - pay the deposit\* to reserve your place on the course



### Some small print

- Please note that the non-refundable deposit\* secures a place on the whole two-year GCSE course.
- Termly fees are reduced on a pro-rata basis and are payable in advance of each term via our website.
- A student's place on the course may be forfeited if a termly payment is not received prior to the start of each term.
- Prices are correct at the time of publication but may be subject to change. All places are offered in accordance with the terms and conditions available on our website.



# TUTOR LED LEARNING...

## ***FREQUENTLY ASKED QUESTIONS***



### ● **When are your term dates?**

We teach in 6-week blocks (occasionally 5 weeks due to Easter) so that our students have ample time to decompress and explore other sides of life between terms. Whilst these 'terms' roughly follow the UK school term dates, they aren't exact as different parts of the country follow different dates. Our [term dates can be found on our website](#).

### ● **What if my child misses a lesson?**

Attendance levels are usually very high for our tutorials but occasionally a lesson is missed. If it is missed then learning goals and selected resources are accessible via the Google classroom. We may also be able to assist further by recapping key points from the missed lesson, before, during or after the next lesson.

### ● **Who arranges the exams?**

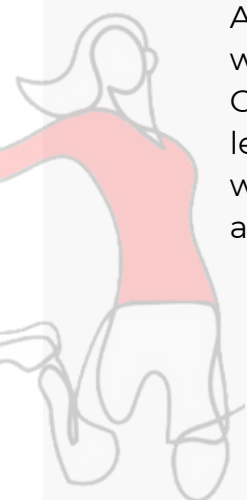
Exam entry is the responsibility of the parent/carer. You are advised to make early enquiries with local exam centres, particularly if your child has specific access requirements. We are partners with Tutors & Exams meaning you can receive a discount off their services with our discount code TLL2021.

### ● **What textbooks does my child need?**

Our [bookshop](#) has titles which will be useful for your child's independent study. If you'd like any further suggestions, or to run a title past us, please just get in touch.

### ● **How much self-directed study should my child be doing?**

All our students are individuals with different strengths and weaknesses across the knowledge and skills needed for success at GCSE level. A GCSE is supposed to be around 110-120 hours of guided learning plus self-study. We'd generally advise allocating 1-2 hours a week of self-study at the start of the course, ramping up to 2-3 hours a week or more nearer the exams.



# TUTOR LED LEARNING...

## ***FREQUENTLY ASKED QUESTIONS***



### ● **Are you good value?**

Tutor Led Learning is not trying to be the cheapest option for tuition. We believe our rates are fair given our experience, professionalism and level of service which means we provide excellent value.

If you are looking at other providers please consider whether the tutors are teaching subjects they are specialists in (ie have a BSc or BA in them), whether they have a recognised teaching qualification (eg a PGCE) and their experience of teaching given exam specifications / associated exam papers.

You may also wish to consider group size, camera use, how group rapport is established and the frequency of marked homework.

### ● **How do you assess my child's progress?**

Due to our small groups a lot of our assessment is formative (ie takes place during lessons) but we do also gather useful information from regular homeworks, tests, revision sessions and mock exams. We're always happy to give an idea of progress if asked so please just get in touch if you'd like some feedback.

### ● **Can I sign siblings or friends' children up to your KS3 courses?**

We would be delighted to welcome more students to our KS3 groups (subject to availability). Please just get in touch.

### ● **Do you have any reviews I can read?**

Yes! Our wonderful parents/carers and students have written us lots of wonderful reviews which you can read on Google, Facebook or on [our website](#).

### ● **Is there any 'small print' I need to know about?**

There are standard Ts and Cs on the website which cover all our tuition. There is also a privacy notice about how we handle data.

Details correct at time of publication (Feb 2026) but subject to change without notice.

